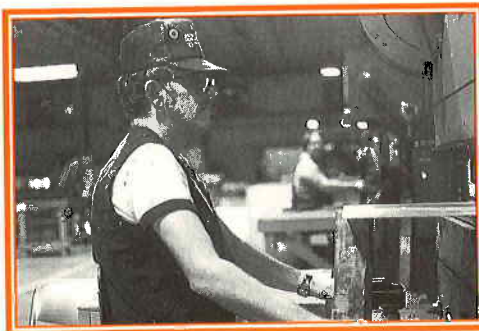
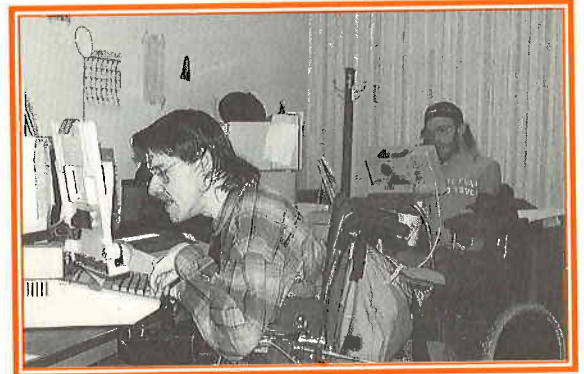
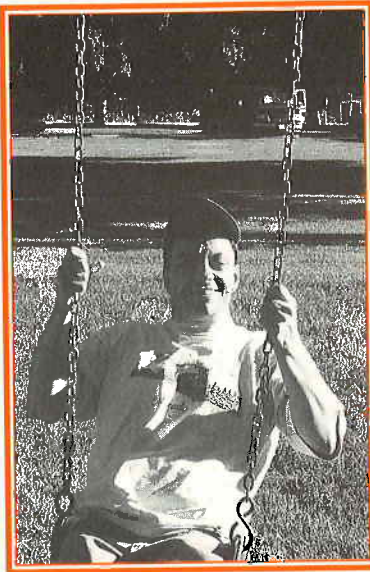
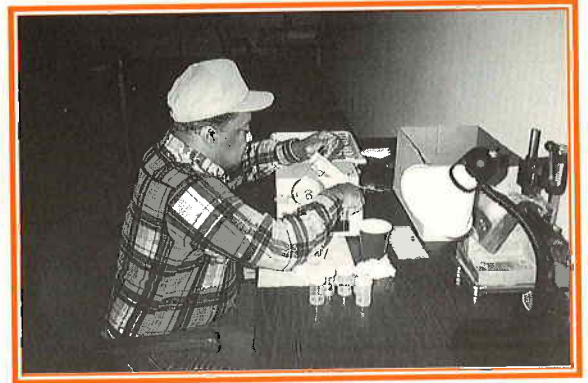
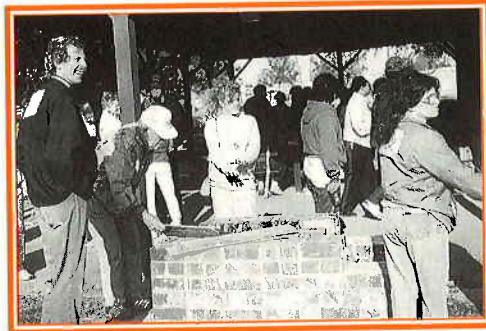


A MACDDS REPORT



**MISSOURIANS WITH DEVELOPMENTAL DISABILITIES:
THE POTENTIAL IMPACT OF GOVERNMENT REFORMS**

October 1996

Preliminary Report on the Potential Impact of Government Reforms

Presented to
Senator James L. Mathewson
President Pro Tem



“There are cities and companies, unions and political parties, in this country that are like dinosaurs waiting for the weather to change. The weather is not going to change. The very ground is shifting beneath us. And what is called for is nothing less than all of us reconceptualizing our roles.”

“People whose lives are affected by a decision must be part of the process of arriving at that decision.”

John Naisbitt
***“Megatrends:
Ten New Directions
Transforming our Lives”***
1982

ABOUT MACDDS

Organized in 1979, Missouri Association of County Developmental Disabilities Services (MACDDS) continues to provide a strong forum for its member county boards, related private organizations and affiliated public agencies to share information, discuss and create solutions to common problems involving persons with developmental disabilities.

A major purpose of MACDDS is to review state and federal regulations, policies and practices to determine how they relate to the delivery of community based-services for persons with developmental disabilities. Due to the blend of urban, suburban and rural member counties, the political strength and concerns of MACDDS collectively represent the voices of county boards and the persons we serve.

MACDDS strives to create the most effective services for person with developmental disabilities at a local level. MACDDS supports positions regarding:

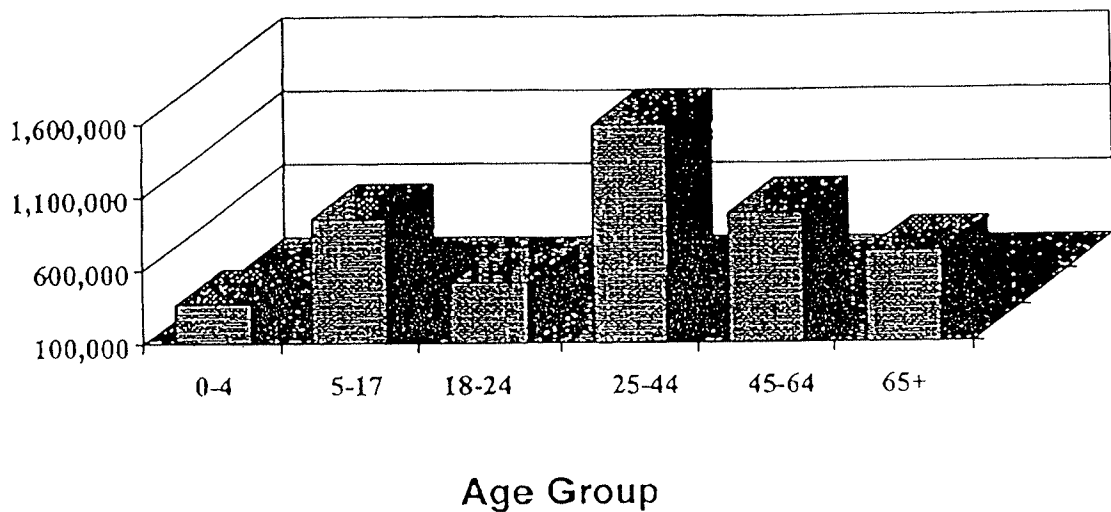
- *local solutions for local problems*
- *greater value for the public dollar*
- *local planning by local people that meets local needs with customer satisfaction, and enables future family-centered, locally coordinated human services.*

The goal of these suggestions is to achieve better quality and more efficient services for persons with developmental disabilities and their families.

DEFINITION OF "Developmental Disability":

- (a) Which is attributable to:
 - a. Mental retardation, cerebral palsy, epilepsy, head injury or autism, or a learning disability related to a brain dysfunction; or
 - b. any other mental or physical impairment or combination of mental or physical impairments; and
- (b) Is manifested before the person attains age twenty-two; and
- (c) Is likely to continue indefinitely; and
- (d) Results in substantial functional limitations in two or more of the following areas of major life activities:
 - a. Self-care;
 - b. Receptive and expressive language development and use;
 - c. Learning;
 - d. Self-direction;
 - e. Capacity of independent living or economic self-sufficiency;
 - f. Mobility; and
- (e) Reflects the person's need for a combination and sequence of special, interdisciplinary, or generic care, habilitation or other services which may be of lifelong or extended duration and are individually planned and coordinated.

1990 Missouri Population



BACKGROUND AND PERSPECTIVE

In the fall of 1995, a whirlwind of activity was taking place in Washington, D.C. related to what many thought were imminent changes to laws, rules, and regulations governing Medicaid as well as the Federal financial commitment to the program.

In Missouri, and other states, state and local officials, advocates, providers and consumers met to hear predictions of the demise of our long-term care service delivery system for people with disabilities. A new term, "managed care" entered our vocabulary. A wave of confusion, fear, anger, and doubt invaded our thinking about the future for Missourians with disabilities.

On November 22, 1995, the President Pro Tem of the Missouri Senate, Jim Mathewson, in a letter to MACDDS President, Wes Buffington, requested a report from the SB40 County Board Association regarding its views on how Missouri's service delivery system might be "re-engineered" to meet the challenges of Medicaid reform and provide meaningful services and service outcomes to Missouri citizens with developmental disabilities and their families.

In the meantime, predicted dates for rapid changes to Medicaid came and passed.

A MACDDS study committee was formed in early December, 1995.

As the committee began its work in earnest, a number of guiding principles emerged:

People with developmental disabilities, and their families, represent one of the state's most vulnerable populations. They rely heavily on "outside" advocacy. Studies have found that persons with developmental disabilities are at substantial risk of abuse and neglect. Persons with disabilities represent a disproportionately large number of persons in foster homes, group homes, and out-of-care facilities. Abuse/neglect constitutes 72% of juvenile court referrals and 52% of out-of-home placement.

- **Societal trends include more single parent families, a dramatic increase of women in the workforce, "baby boomers", and increasing populations of people over age 65. This challenge requires that we use our resources more effectively.**
- **Comprehensive approaches to service delivery are needed to meet the needs of the developmental disabilities population. More often than not, the service delivery needs of these individuals and families "cross-over" state/local agency lines and require integrated services/resources coordinated by a single entity.**

